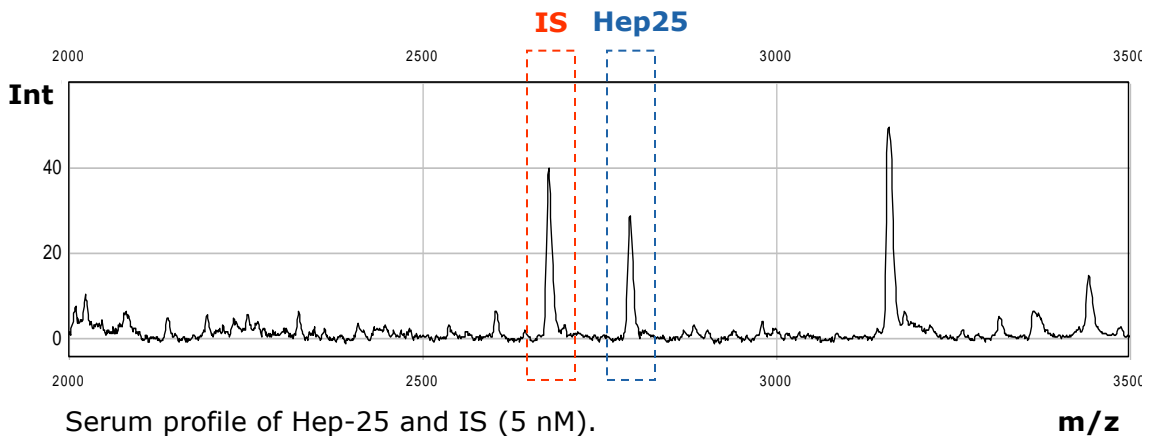


Quantitative Hepcidin-25 assay in Serum & Plasma

Method

The assay is based on a combination of weak cation exchange chromatography and time-of-flight mass spectrometry. An internal standard (IS), analogue of hepcidin, is used for quantification.



Reference Values for Serum Hepcidin-25^a

Men (age 18-85+; n= 1066)

Median = **4.5 nM**

(95% reference range: < 0.5 nM - 14.7 nM)

Pre-menopausal women (age 18-54; n=424)

Median = **2.0 nM**

(95% reference range: < 0.5 nM - 12.3 nM)

Post-menopausal women (age 55-85+; n=458)

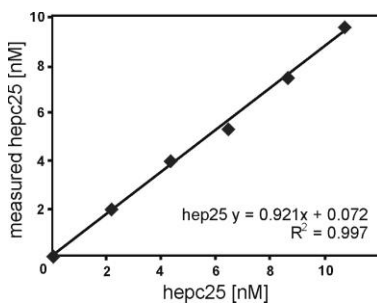
Median = **4.9 nM**

(95% reference range: <0.5 nM - 15.6 nM)

^a results obtained for serum do not differ from those obtained for heparine plasma

Linearity curve

Hepcidin-25 in serum



Literature

Kemna *et al* (2005) Blood 106:3268-3270
Kemna *et al* (2007) Clin Chem 53:620-628
Kemna *et al* (2008) Haematologica 93:90-97
Swinkels *et al* (2008) PLoS ONE 3:e2706
Kroot *et al* (2009) Anal Biochem 389:124-129
Kroot *et al* (2010) Clin Chem 56:1570-1579
Galesloot *et al* (2011) Blood 117: e218-25
Kroot *et al* (2011) Clin Chem 57:1650-1669

Lower limit of detection (signal/noise=3): 0.5 nM

Coefficient of variation:

Intra assay range: 2.2-3.7%

Inter assay range: 3.9-9.1 %