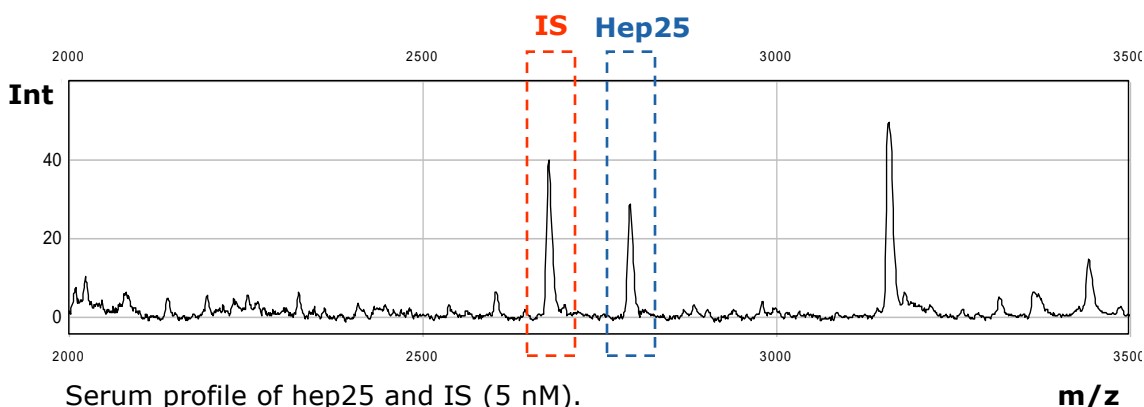


Quantitative Hepcidin25 Assay in Serum & Plasma

Method:

The assay is based on a combination of weak cation exchange chromatography and time-of-flight mass spectrometry. An internal standard (IS = hepcidin analogue) is used for quantification.

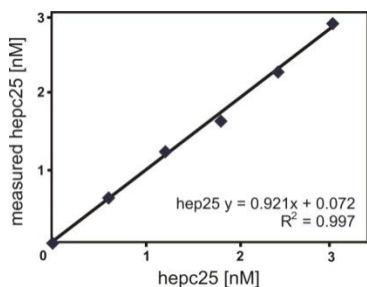


Reference values

	n	Mean nM	Median nM	Min nM	Max nM
All (4 timepoints)	24	4.5 ± 2.8	4.2	0.5	13.9
Male (4 timepoints)	11	5.2 ± 3.0	4.4	1.1	13.9
Female (4 timepoints)	13	4.0 ± 2.5	4.0	0.5	10.3
All first morning samples	24	2.8 ± 1.7	2.9	0.5	8.2

Calibration curve

hepcidin 25 in serum



Lower limit of detection (signal/noise=3): 0.5 nM

Coefficient of variation:

Intra run: 2 samples, 8 times repeated: 3-7 %

Inter run: 3 samples, 8 times repeated: 7-9%

References:

- Kemna *et al* (2005) Blood;106:3268-3270.
- Kemna *et al* (2007) Clin.Chem;3:620-628.
- Kemna *et al* (2008) Haematologica;93:90-97
- Swinkels *et al* (2008) PLoS ONE;3:e2706