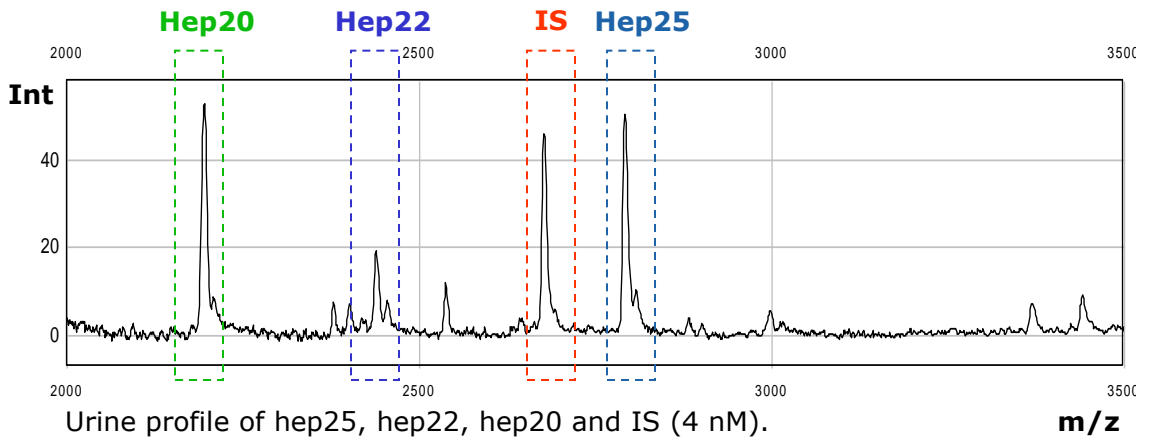


# Quantitative Hepcidin-25 assay in Urine

## Method:

The assay is based on a combination of weak cation exchange chromatography and time-of-flight mass spectrometry. An internal standard (IS), analogue of hepcidin, is used for quantification.

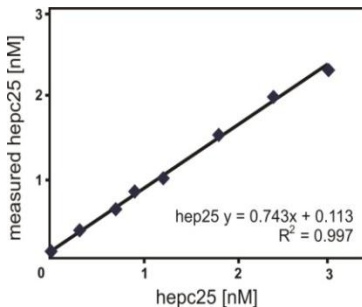


## Reference values

	n	Mean ± SD	Median	Min	Max
[nmol / mmol Creatinine]					
All (5 timepoints)	24	1.1 ± 1.5	0.6	0.01	10.6
Male (5 timepoints)	11	1.0 ± 1.1	0.6	0.04	5.1
Female (5 timepoints)	13	1.2 ± 3.4	0.5	0.01	10.6
All first morning samples	24	0.6 ± 0.8	0.3	0.01	3.8

## Calibration curve

Hepcidin-25 in urine



**Lower limit of detection** (signal/noise=3): 50 pM

**Coefficient of variation:**

Intra run: 2 samples 8 times repeated: 3-7 %

Inter run: 3 samples 8 times repeated: 10-13%

## References:

- Kemna *et al* (2005) Blood 106:3268-3270
- Kemna *et al* (2007) Clin Chem 53:620-628
- Kemna *et al* (2008) Haematologica 93:90-97
- Swinkels *et al* (2008) PLoS ONE 3:e2706
- Kroot *et al* (2009) Anal Biochem 389:124-129
- Kroot *et al* (2010) Clin Chem 56:1570-1579