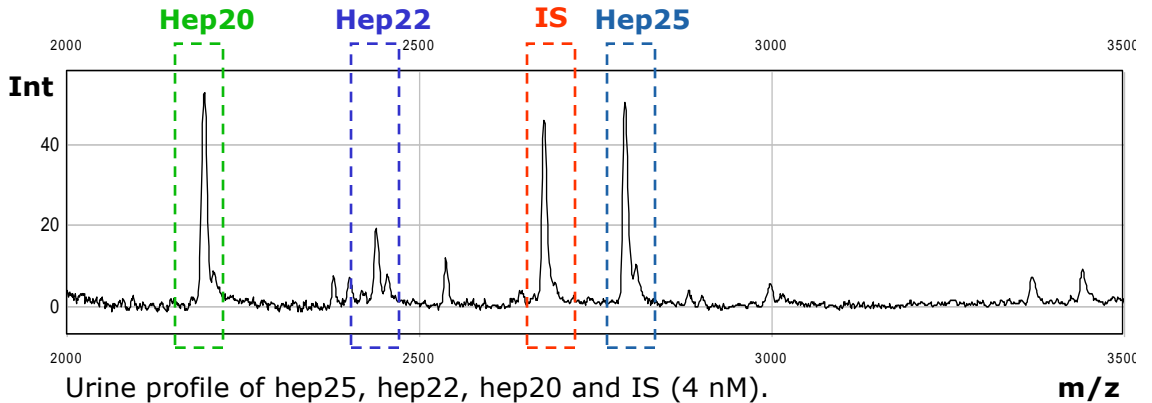


# Quantitative Hepcidin25 Assay in Urine

## Method:

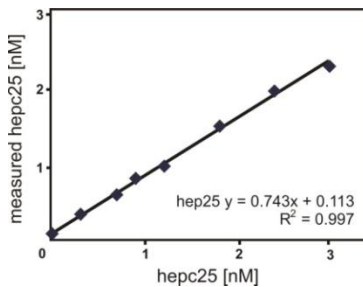
The assay is based on a combination of weak cation exchange chromatography and time-of-flight mass spectrometry. An internal standard (IS = hepcidin analogue) is used for quantification.



## Reference values

	n	Mean ± SD	Median	Min	Max
nmol/ mmol Creat					
All (5 timepoints)	24	1.1 ± 1.5	0.6	0.01	10.6
Male (5 timepoints)	11	1.0 ± 1.1	0.6	0.04	5.1
Female (5 timepoints)	13	1.2 ± 3.4	0.5	0.01	10.6
All first morning samples	24	0.6 ± 0.8	0.3	0.01	3.8

## Calibration curve hepcidin 25 in urine



**Lower limit of detection** (signal/noise=3): 50 pM

**Coefficient of variation:**

Intra run: 2 samples , 8 times repeated: 3-7 %

Inter run: 3 samples , 8 times repeated: 10-13%

## References:

- Kemna *et al* (2005) Blood;106:3268-3270.
- Kemna *et al* (2007) Clin.Chem;3:620-628.
- Kemna *et al* (2008) Haematologica;93:90-97
- Swinkels *et al* (2008) PLoS ONE;3:e2706